

Top marks for ProgressCRM

ProgressCRM is "100% Recommended" by users as a Membership and Fundraising package in 2006 Survey

Charity Finance magazine published its IT Survey in May 2006.

Fisk Brett was delighted to see that Progress scored 100% from 'Users who would recommend a membership package', and 'Users who would recommend a fundraising package'!

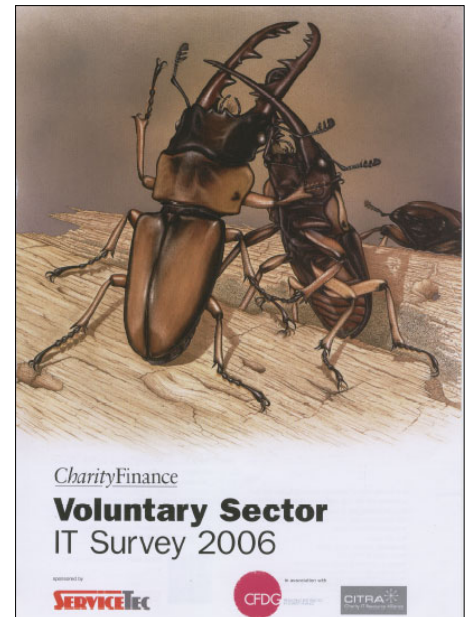
In the **Membership** category, Progress was joint first with Filemakers, but leaving Raiser's Edge with just over 80%. Access came in with Donorflex and bespoke systems around 55%, leaving Alms at under 40%.

The survey also suggests that remote working is increasingly important.

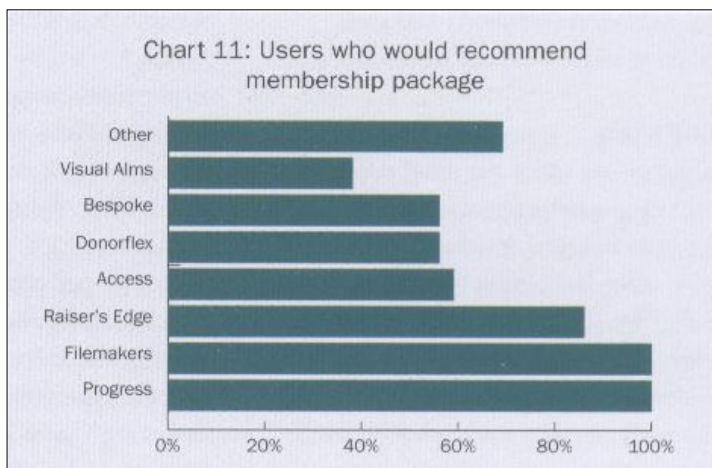
The article says "The popularity of remote access for home workers continues to increase with 56% of charities offering it to some or all of their staff compared to 46% last year. Among those that do offer it, on average 41% of their staff are able to take advantage. It is more prevalent in larger charities where over 80% offer it compared to a third of smaller ones."

"John Tate, chair of Citra, thinks technology will push this forward as the internet becomes more and more part of our lives and applications are hosted on the web.

"There was a feeling that if you can't see it and touch it you won't feel comfortable but increasingly there will be more service centres remotely based"

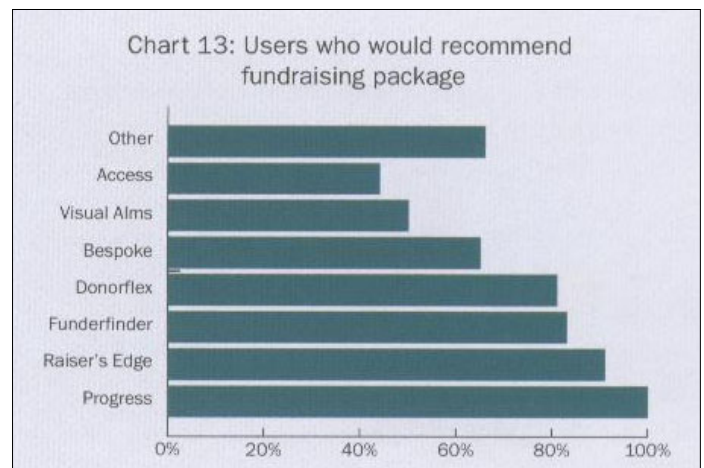


For full details of the survey, see <http://www.charityfinance.co.uk/it/>



In the **Fundraising** category, Progress was the clear leader at 100% with Raiser's Edge trailing at 90%, Funderfinder and Donorflex around 80%, and Visual Alms at around 50%

This is even better than in 2005 when Progress scored 100% for Membership over Raiser's Edge 80%, and 85% in the Fundraising section..



In the Future Trends section, Robin Fisk agrees. They quoted Robin who said "We're finding that charities want seamless integration of their software applications; easy access via the web; and better management information.

"The technology which provides the solution to these needs is called dot net (.net) – it is Microsoft's strategy for integrating applications and devices using Web Services, SQL Server, Windows and the web. The key integration technology will be Web Services, which allow applications to share data among themselves using XML messages".

fisk brett
engaging solutions

Fisk Brett Ltd
olivier house, 77-79 high street,
stevenage, west sussex BN44 3RE
united kingdom
tel +44 (0) 1903 879379
fax +44 (0) 1903 879797
www.fiskbrett.co.uk
info@fiskbrett.co.uk